



## DNC2X4MPTD-FC-DUAL180



### Key Features



- Outputs 180° wide angle splicing image.
- Outputs max. 8MP (4096 x 1800@25 fps)
- H.265 codec, high compression rate & ultra-low bit rate.
- Built-in warm light & the max. illumination distance is 40m.
- ROI, Smart H.264+, H.265+, Ai H.264, H.265, flexible coding, applicable to various bandwidth & storage environments.
- WDR, 3D NR, HLC, BLC, digital watermarking, applicable to various monitoring scenes.
- Alarm: 1 in, 1 out, Audio: 1 in, 1 out. Supports max. 512 G Micro SD card, built-in Mic & Speaker, support two-way talk.
- 12 VDC/PoE power supply, easy for installation.
- IP67 protection
- EPTZ: Enlarge & track the targets of intelligent alarms.
- SMD 4.0



## Specifications

<b>DNC2X4MPTD-FC-DUAL180</b>				
<b>Camera</b>				
Image Sensor	Dual 1/1.8" CMOS			
Max. Resolution	4096 (H) x 1800 (V)			
ROM	128 MB			
RAM	1 GB			
Scanning System	Progressive			
Electronic Shutter Speed	Auto, manual 1/3 s - 1/100,000 s			
S/N Ratio	>56 dB			
Pan/Tilt/Rotation Range	Tilt: 0° - 90° Rotation: 0° - 360° Pan: 0° - 360°			
Min. Illumination	0.005 lux @F1.0 (Color, 30 IRE) 0.0002 lux @F1.0 (B/W, 30 IRE) 0 lux (Illuminator on)			
Illumination Distance	40m (131.23 ft)			
Illuminator On/Off control	Auto			
Illuminator Number	4 (Warm Light)			
<b>Lens</b>				
Lens Type	Fixed-focal			
Lens Mount	M16			
Focal Length	3.6mm			
Max. Aperture	F1.6			
Field of View	Horizontal: 180° Vertical: 48°			
Iris Control	Fixed			
Close Focus Distance	3.6m (11.81 ft)			
DORI Distance	Detect	Observe	Recognize	Identify
	70.3m (230.64 ft)	28.1m (92.19 ft)	14.1m (46.26 ft)	7.0m (22.97 ft)
<b>Intelligence</b>				
IVS (Perimeter Protection)	Intrusion, tripwire, fast moving (the three functions support the classification and accurate detection of vehicle and human), loitering detection, people gathering & parking detection			
Heat Map	Yes			
Smart Object Detection	Smart abandoned object & smart missing object			
People Counting	Tripwire people counting & people counting in area, generating & exporting report (day/month/year), queue management, generating & exporting report (day/month), 4 rules can be set for tripwire, people counting in area & queue management.			
<b>Video</b>				
Video Compression	H.265, H.264, H.264H, H.264B, MJPEG (Only supported by the sub stream)			
Stream Capability	3 streams			
Resolution	8M (4096 × 1800); 6.5M (3840 × 1680); 4M (3840 × 1080); 4M (2880 × 1264); 1.6M (1920 × 832); 0.7M (1280 × 560); 0.5M (1024 × 452)			



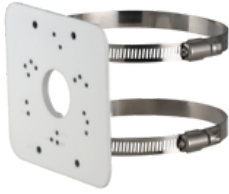
Video Frame Rate	<p>WDR off: Main Stream: 4096 x 1800@1-25fps Sub Stream: 1024 x 452@1-25fps Third Stream: 1920 x 832@1-25fps WDR on: Main Stream: 4096 x 1800@1-20fps Sub Stream: 1024 x 452@1-20fps Third Stream: 1920 x 832@1-20fps *The values above are the max. frame rate of each stream, for multiple streams, the values will be subjected to the total encoding capacity.</p>
Bit Rate Control	CBR/VBR
Video Bit Rate	H.264: 9 kbps - 8192 kbps H.265: 9 kbps - 8192 kbps
Day/Night	Color, B/W
BLC	Yes
HLC	Yes
WDR	140 dB
White Balance	Auto, natural, street lamp, outdoor, manual, regional custom
Gain Control	Auto
Noise Reduction	3D NR
Motion Detection	Off/On (4 areas, rectangular)
Region of Interest (ROI)	Yes (4 areas)
Privacy Masking	4 areas
Scene Self-Adaptation (SSA)	Yes
Defog	Yes
<b>Audio</b>	
Audio Compression	G.711A, G.711Mu, G.726, G.723, PCM
Built-in Mic	Yes
<b>Alarm</b>	
Alarm Event	No SD card, SD card full, SD card error, network disconnection, IP conflict, illegal access, motion detection, video tampering, tripwire, intrusion, fast moving, abandoned object, missing object, loitering detection, people gathering, parking detection, scene changing, audio detection, voltage detection, external alarm, SMD, people counting in area, stay detection, people counting, security exception
<b>Network</b>	
Network	RJ-45 (10/100/1000 Base-T)
SDK & API	Yes
Network Protocol	IPv4; IPv6; HTTP;TCP; UDP; ARP; RTP; RTSP; RTCP; RTMP; SMTP; FTP; SFTP; DHCP; DNS; DDNS; QoS; UPnP; NTP; Multicast; ICMP; IGMP; NFS; SAMBA; PPPoE; SNMP; Bonjour



Mobile Client	iOS, Android
Interoperability	ONVIF (Profile S, Profile G, Profile T), CGI, Milestone
User/Host	20 (total bandwidth: 80M)
Management Software	Smart PSS, DSS, DMSS
Storage	FTP, SFTP, Micro SD Card (support max. 512 GB), NAS
Browser	IE: IE 8 & later Chrome Firefox
Cyber Security	Video encryption; Firmware encryption; Configuration encryption; Digest; WSSE; Account lockout; Security logs; IP/MAC filtering; Generation and importing of X.509 certification; syslog; HTTPS; 802.1x; Trusted boot; Trusted execution; Trusted upgrade
<b>Certification</b>	
Certifications	CE-LVD: EN62368-1 CE-EMC: Electromagnetic Compatibility Directive 2014/30/EU FCC: 47 CFR FCC Part 15, Subpart B UL/CUL: UL60950-1 CAN/CSA C22.2 No. 60950-1-07
<b>Port</b>	
Audio Input	1 channel (RCA port)
Audio Output	1 channel (RCA port)
Alarm Input	1 channel in: 5mA 3V-5V VDC
Alarm Output	1 channel out: 300 mA 12 VDC
<b>Power</b>	
Power Supply	12 VDC ( $\pm 30\%$ )/PoE+ (802.3at)/ePoE
Power Consumption	Basic: 4.8 W (12 VDC); 5.5 W (PoE) Max. (WDR + intelligence + warm light + SPK): 10.5W (12 VDC); 11.8 W (PoE)
<b>Environment</b>	
Operating Temperature	-40°C to + 60°C (-40°F to +140°F)
Storage Temperature	-40°C to +60°C (-40°F to +140°F)
Protection	IP67
Operating Humidity	$\leq 95\%$
<b>Structure</b>	
Casing Material	Metal
Product Dimensions	$\Phi 122$ mm $\times$ 131.9 mm ( $\Phi 4.80$ " $\times$ 5.19" )
Net Weight	990 g (2.18 lb)
Gross Weight	1150 g (2.54 lb)



**Accessories**



PFA152  
Pole Mount Bracket



PFA137  
Junction Box



PFA203W  
Wall Mount Bracket



PFA106  
Mount Adapter



PFB220C  
Ceiling Mount Bracket

**Dimensions**

